

The Castle Dungeon



Summary

- The last four rooms of this attraction are wheelchair accessible and are available free of charge to wheelchair users and one carer, subject to availability. Please note that, whilst free you will still need to book a timed ticket to enter the attraction.
- There is a door which provides step-free access into the Judges Room and the final four rooms of the Dungeon.
- The dungeon is sombre/dark throughout
- At points a volunteer/victim is chosen to assist.
- There are multiple steps throughout and a number of spiral staircases to negotiate.
- There are light sound effects throughout which can be chilling
- The dungeon features a mirror maze
- There are jump scares throughout the attraction

Access Point



- There is a tent with Torn/Distress curtains to enter the attraction.
- This information is for the access point located to the left as you enter the Courtyard through The Barbican.
- There is a photo opportunity on entering the tent
- There are 4 step upon leaving the tent to descend to the Jester pit
- The Jester's Introduction
- During busy periods the ester pit space can become congested.
- The Jester can be loud and dynamic.

The Monk Room



- Access to this first room of the dungeon is via a stairway with 21 clearly marked steps
- There is a left-hand banister
- Light level is sombre in the stairway
- There are low sound effects
- During busy periods the Monk room can become congested.
- There is a one-way route through this space.
- The story in this area is presented by augmented reality.
- Light level is low

Getting to the Plague Room



- The information below describes the route between The Monk' Room and The Doctor's Room.
- There is step-free access along the route.
- There are three relatively steep ramps along this route.
- Light level is poor

The Plague Room



- There is step free access throughout this room.
- A member of the public is chosen to assist, should you not wish to assist, please would you or your carer alert the character, who will move on.

Please note that due to sombre lighting and the nature of the space a Sunflower Lanyard may not be recognised.

- During busy periods this space can become congested.
- The story/show is presented by a character actor.
- The lighting levels in this area are low to moderate.

Getting To the Torture Room



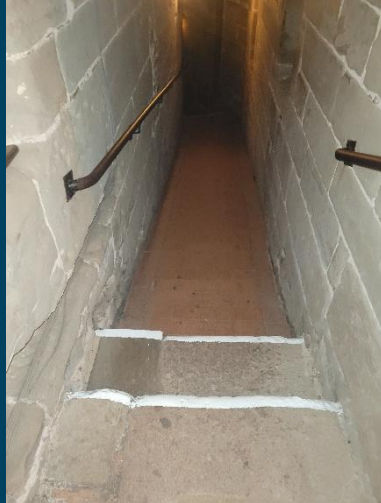
- The information below describes the route between The Plague Room and the Torture Room.
- There is a single step up about 1m from the Plague, then immediately 14 clearly marked steps with a handrail on the right steps down.
- The staircase is a very steep spiral
- The lighting levels are low to moderate.

The Torture Room



- There is step free access throughout this room.
- A member of the public is chosen to assist, should you not wish to assist please would you or your carer alert the character, who will move on. Please note that due to sombre lighting and the nature of the space a Sunflower Lanyard may not be recognised.
- During busy periods this space can become congested.
- The story/show is presented by a character actor.
- The lighting level in this area is moderate.

Getting To the Judge's Room



- The information below describes the route between The Torture room and the Judges Room.
- There is one clearly marked step about 2m from the exit to the Torture room
- There is a relatively steep ramp going down, with a handrail on the right, shortly after the previous step
- There are 4 clearly marked steps with a handrail on the right going down, shortly after the ramp (3m)
- The lighting levels are low/sombre

Accessible Entrance to the Judge's Room



- This information is for the wheelchair entrance located to the right of the Jesters area, from where wheelchair users can enter the last 4 rooms of the dungeon.
- Due to the nature of the space, a maximum of two wheelchairs are permitted for each time slot.
- A member of staff will aid wheelchair users using this entrance, please note however that staff will not accompany the wheelchair user throughout the attraction.
- From this entrance there is an immediate right turn into the Judge's room
- Some larger motorised wheelchairs may not fit through this entrance. The width of the opening is 87cm. Should this be the case then staff will provide a manual wheelchair. Please note however that Warwick castle staff are not permitted to aid transfer.

The Judge's Room



- There is step free access throughout this room.
- There is bench seating available in this room.
- members of the public is chosen to assist, should you not wish to assist please would you or your carer alert the character, who will move on. Please note that due to sombre lighting and the nature of the space a Sunflower Lanyard may not be recognised.
- During busy periods this space can become congested.
- The story/show is presented by a character actor.
- The lighting levels in this area are moderate.
- Getting To the Execution Room
- Guests step directly from the Judges room into the execution room
- There is a short ramp upon entry

The Execution Room



- There is bench seating available.
- The seating will move at one point during the show and therefore not recommended for guests with back problems or pregnant women
- During busy periods the attraction space can become congested.
- There is a one-way route through this space.
- The show is presented by a character actor.
- The lighting levels in this area are moderate.
- Getting To (The Mirror Maze)
- Guests step directly from the execution room to the mirror maze

The Mirror Maze



- There is step free access throughout the maze.
- The nature of the maze is to confuse and may be particularly difficult for visually impaired guests
- There is not seating available within the attraction space.
- The lighting levels in this area are moderate.

Almoner room



- There is step free access throughout this room.
- There is bench seating available.
- There is a one-way route through this space.
- The show is presented by an actor.
- A light strobe effect is used at points during the show

- The lighting levels in this area are low (blackout) to moderate.
- Accessible Exit
- A member of staff will guide wheelchair users to this exit

Main Exit Point

- There is stepped access at this exit point.
- This exit point is an open doorway.
- There is a small lip at the exit point of 2cm.
- There is 1 step located through the first archway to the left.
- Steps are clearly marked.
- There is not a handrail at the step.
- The lighting levels at the step are low to moderate.